

# PROFESSIONAL/MEDICAL BUILDING FOR LEASE

# ROSE

COMMERCIAL REAL ESTATE

## EXCLUSIVE LISTING

PAVILIONS OF VOORHEES  
2301 EVESHAM RD., BUILDING 800  
VOORHEES, NJ

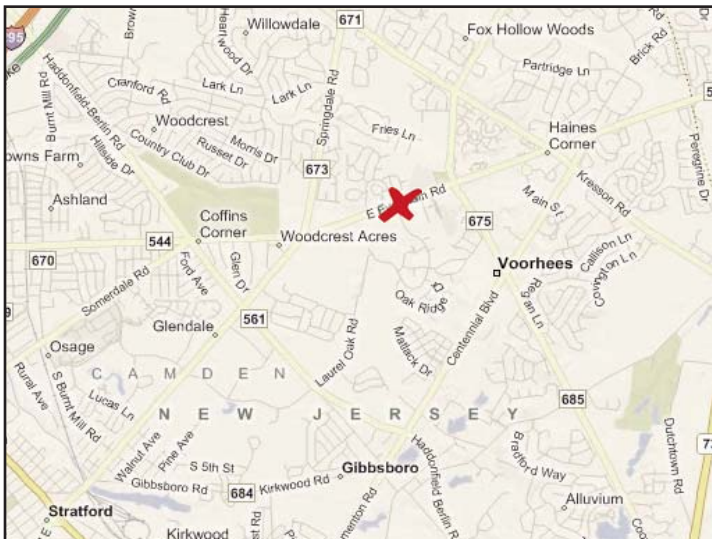


**Property Description:** Professional/Medical Office Building For Lease

**Available:** 1,169 +/- SF - 16,199 +/- SF

**Lease Rate:** Call for Information

- Comments:**
- Class 'A' Medical Space
  - New Ownership and Major Capital Improvements
  - Located adjacent to Virtua Health and Wellness Medical Campus
  - Minutes from Virtua Hospital
  - Easy Access to I-295, Route 73, and Route 70 and all area bridges
  - Abundant Parking 5 to 1



*For Further Information, Please Contact:*

**Brett Davidoff (Ext. 27)**

**(856) 985-9522**

**[bdavidoff@rosecommercial.com](mailto:bdavidoff@rosecommercial.com)**

ALL INFORMATION FURNISHED REGARDING PROPERTY FOR SALE, RENTAL OR FINANCING IS FROM SOURCES DEEMED RELIABLE, BUT NO WARRANTY OR REPRESENTATION IS MADE AS TO THE ACCURACY THEREOF AND SAME IS SUBMITTED SUBJECT TO ERRORS, OMISSIONS, CHANGE OF PRICE, RENTAL OR OTHER CONDITIONS, PRIOR SALE, LEASE OR FINANCING OR WITHDRAWAL WITHOUT NOTICE. NO LIABILITY OF ANY KIND IS TO BE IMPOSED ON THE BROKER HEREIN.

651 Route 73 N, Suite 111 • Marlton, NJ 08053 • Phone: (856) 985-9522 • Fax: (856) 985-9488

[www.rosecommercial.com](http://www.rosecommercial.com)

**Marlton, NJ**

# PROFESSIONAL/MEDICAL BUILDING FOR LEASE



EXCLUSIVE LISTING

PAVILIONS OF VOORHEES  
2301 EVESHAM RD., BUILDING 800  
VOORHEES, NJ



ALL INFORMATION FURNISHED REGARDING PROPERTY FOR SALE, RENTAL OR FINANCING IS FROM SOURCES DEEMED RELIABLE, BUT NO WARRANTY OR REPRESENTATION IS MADE AS TO THE ACCURACY THEREOF AND SAME IS SUBMITTED SUBJECT TO ERRORS, OMISSIONS, CHANGE OF PRICE, RENTAL OR OTHER CONDITIONS, PRIOR SALE, LEASE OR FINANCING OR WITHDRAWAL WITHOUT NOTICE. NO LIABILITY OF ANY KIND IS TO BE IMPOSED ON THE BROKER HEREIN.

651 Route 73 North, Suite 111 • Marlton, NJ 08053 • Phone: (856) 985-9522 • Fax: (856) 985-9488

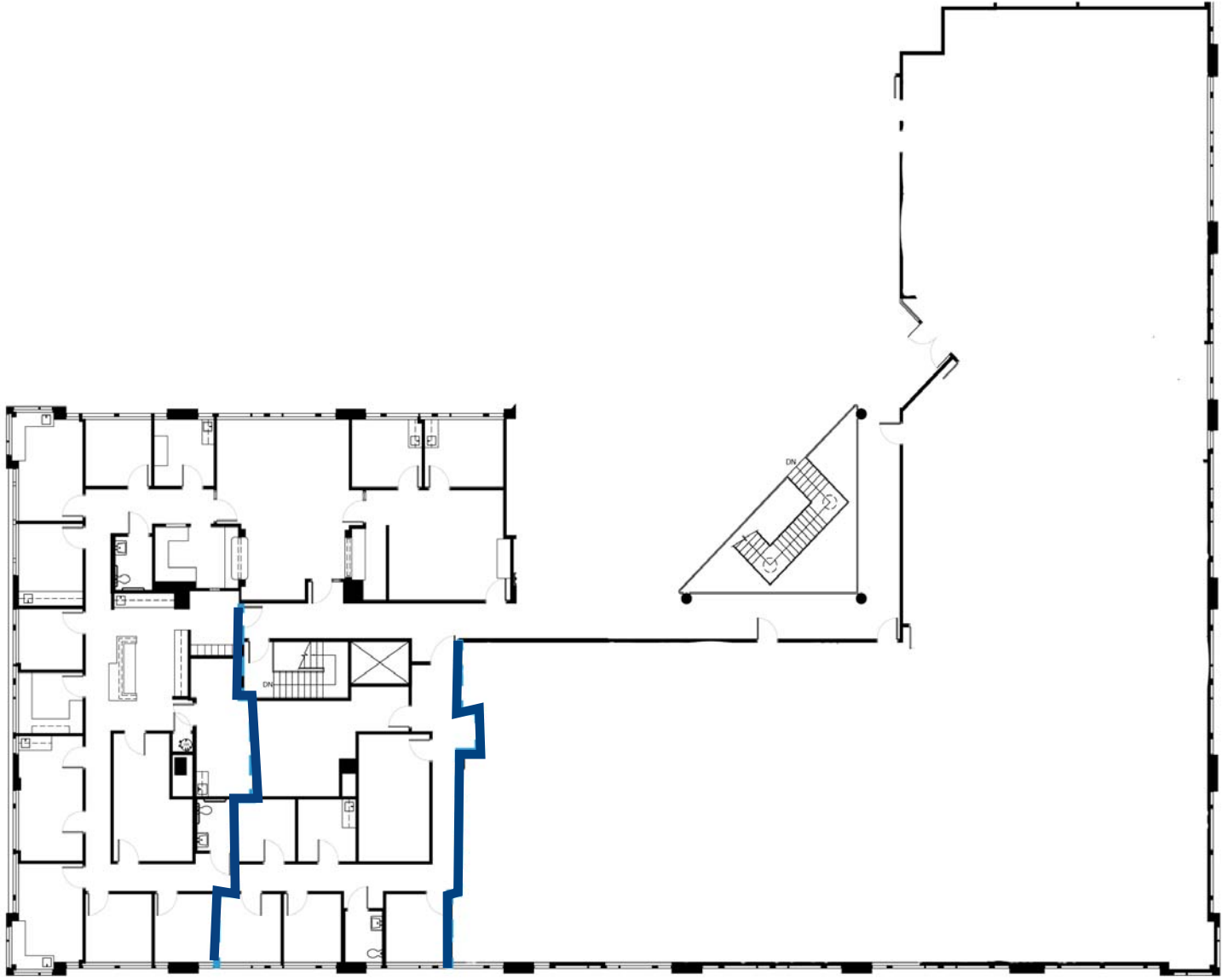
[www.rosecommercial.com](http://www.rosecommercial.com)



# 2ND FLOOR SUITE FOR LEASE

PAVILIONS OF VOORHEES  
2301 EVESHAM RD., BUILDING  
800 VOORHEES, NJ

EXCLUSIVE LISTING



4,229 +/- SF

1,525 +/- SF

10,445 +/- SF

16,199 +/- SF

ALL INFORMATION FURNISHED REGARDING PROPERTY FOR SALE, RENTAL OR FINANCING IS FROM SOURCES DEEMED RELIABLE, BUT NO WARRANTY OR REPRESENTATION IS MADE AS TO THE ACCURACY THEREOF AND SAME IS SUBMITTED SUBJECT TO ERRORS, OMISSIONS, CHANGE OF PRICE, RENTAL OR OTHER CONDITIONS, PRIOR SALE, LEASE OR FINANCING OR WITHDRAWAL WITHOUT NOTICE. NO LIABILITY OF ANY KIND IS TO BE IMPOSED ON THE BROKER HEREIN.

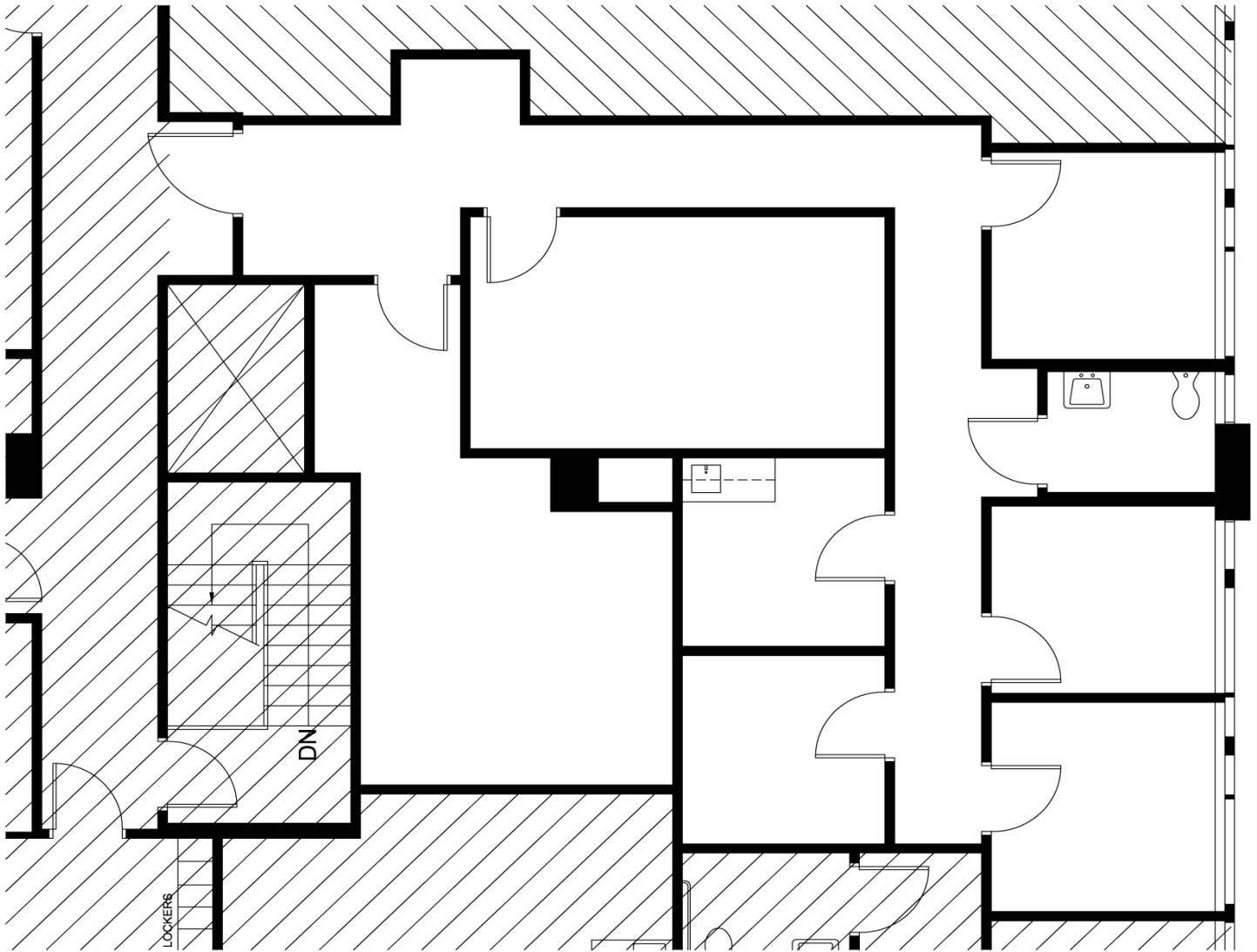
651 Route 73 North, Suite 111 • Marlton, NJ 08053 • Phone: (856) 985-9522 • Fax: (856) 985-9488



# 2ND FLOOR SUITE FOR LEASE

EXCLUSIVE LISTING

PAVILIONS OF VOORHEES  
2301 EVESHAM RD., BUILDING  
800 VOORHEES, NJ



**1,525 +/- SF**

ALL INFORMATION FURNISHED REGARDING PROPERTY FOR SALE, RENTAL OR FINANCING IS FROM SOURCES DEEMED RELIABLE, BUT NO WARRANTY OR REPRESENTATION IS MADE AS TO THE ACCURACY THEREOF AND SAME IS SUBMITTED SUBJECT TO ERRORS, OMISSIONS, CHANGE OF PRICE, RENTAL OR OTHER CONDITIONS, PRIOR SALE, LEASE OR FINANCING OR WITHDRAWAL WITHOUT NOTICE. NO LIABILITY OF ANY KIND IS TO BE IMPOSED ON THE BROKER HEREIN.

651 Route 73 North, Suite 111 • Marlton, NJ 08053 • Phone: (856) 985-9522 • Fax: (856) 985-9488

[www.rosecommercial.com](http://www.rosecommercial.com)